

Getting Started With



	A	B	C	D	E
1		Under Average	Simulated	Chance of	
2		Assumptions	Average	Being	
3	Operating Costs	\$0	\$160	Beyond Budget	75%
4	Revenue	\$1,000,000	\$600,000	Below Projection	50%
5	Project completion	10 weeks	15 Weeks	Behind Schedule	88%

Contents

1. Basic Commands

- a) SIP Input
- b) Chance of Whatever
- c) Graphs
- d) Insert Average, Standard Deviation, & Percentile
- e) Insert Tail Risk
- f) Save as CSV
- g) Settings and About

2. Reading Libraries



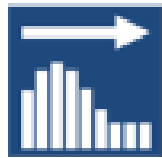
1. Basic Commands

Determine the chance that any formula is greater or less than any specified target

Determine the simulated average of any formula

Determine the simulated average of results beyond a specified target

Settings, including number of trials & Chance percent rounding



SIP Input



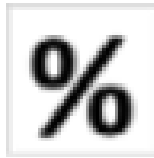
Chance of Whatever



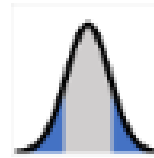
Graphs

Avg

Insert Average



Insert Percentile



Insert Tail Risk

σ

Insert Std Dev



Save as CSV



ChanceCalc Settings



About

Select SIP Libraries and input into your model

Create histograms or cumulative charts of any formula or scatter plots of any pair of formulas

Determine a specified percentile of any formula

Standard Deviation

Save simulated results in CSV format

Check version number



SIP
Input

a. SIP Input

Insert SIPs

Destination: C1

Library: Gaussian Copula Development Time Library

Buttons: Open Local Lib..., Use Clipboard

Filter: [Empty]

Sort alphabetically

- Accounts
- Products
- Orders
- Fulfillment
- Marketing

Insert Name: To Left

Sparkline Location: C1

Buttons: OK, Cancel

1. Select destination cells. It saves time to do this before clicking SIP Input

2a. Open a copied SIP library or link to library

2b. Open a SIP library on your local machine

3. Select SIPs to Insert

Optionally insert SIP names

Optionally specify Sparkline location

Information on active library appears in A1:A4. If these cells are not empty, you are prompted for an alternate location.

	A	B	C	D
1	Trial		Electricity	<i>8.61791</i>
2	1		Parking	<i>49047</i>
3	Permits_Approval_Timeframe_Library		Sewer	<i>88064</i>
4	S...		Water	<i>9388</i>

SIPs appear here. SIPs may have distribution graphs if included in library metadata. Italics are reminder that this number a single trial of multiple trials.

A1: Data to display. May be changed to metadata.

A2: Specifies trial number when A1 set to Trial

A3: Name of active library

A4: Library provenance



Chance of Whatever

b. Chance of Whatever

1. Select location of Chance cell before clicking button

2. Fill in fields and click **OK**

4. The optional Sparkline Destination will be auto-filled based on the Formula address and the Default Sparkline Position in the Settings dialog. You may also manually adjust it.

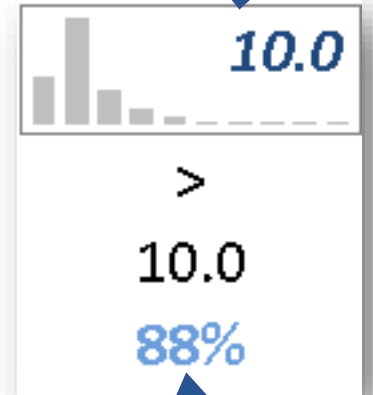
3. You may optionally name formulas when you get statistics on them. This is useful if you plan to save your outputs.

Formula will be simulated with a resulting sparkline histogram. Text will be *Italics* to indicate a single trial of many.

Chance of Whatever

Names (optional)	Total_Duration
Formula	Sheet1!\$D\$8
Relation (e.g. < or >=)	Sheet1!\$D\$9
Target value	Sheet1!\$D\$10
Stats Destination	Sheet1!\$D\$11
Sparkline Destination	D8

OK Cancel



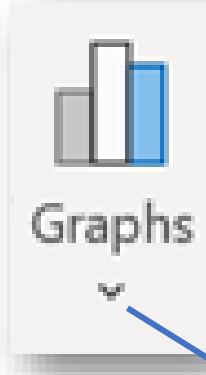
Chance appears in Blue to indicate a statistic calculated over all trials.

c. Graphs

1. Select formula cell to graph before clicking button

3. You may optionally name formulas when you graph them. This is useful if you plan to save your outputs.

2. Click button to create histograms, cumulative graphs



4. Click down arrow for scatter plots

Chart Selected
 Chart SIPmath Out

Names (optional)

Outputs to Graph: \$D\$8

Number of Bins: 50

Sparkline
 Excel chart
 Chart data only

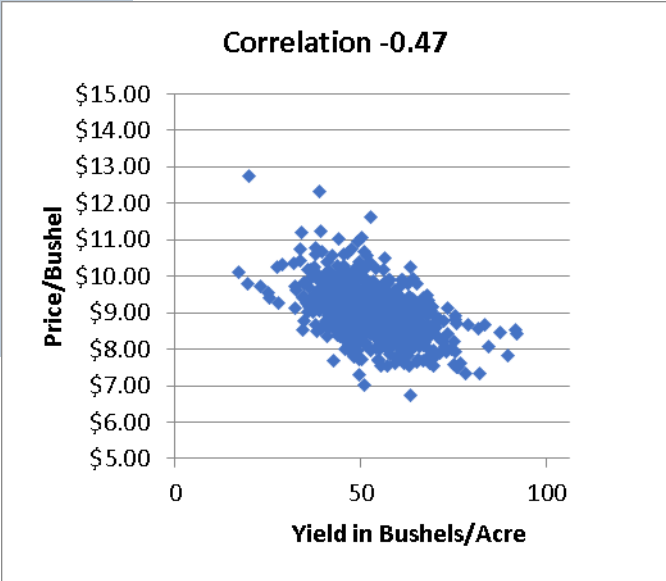
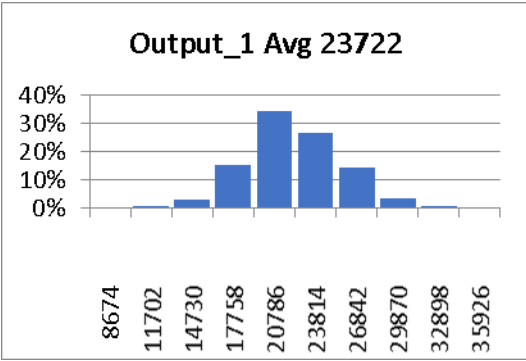
Integer Charts?

Put multiple charts in rows
 Put multiple charts in columns

OK Cancel Chart Controls

X output cell: Sheet1!\$D\$3
 Y output cell: Sheet1!\$D\$4
 Optional Correl Cell: Sheet1!\$D\$14

OK Cancel



d. Insert Avg, Standard Deviation, & Percentile

1. Select location of Stats before clicking button

Reminder: You may optionally name formulas when you get statistics on them. This is useful if you plan to save your outputs.

4. The optional Sparkline Destination will be auto-filled based on the Formula address and the Default Sparkline Position in the Settings Dialog. You may also manually adjust it.

Stats appears in blue to indicate a statistic calculated over all trials.

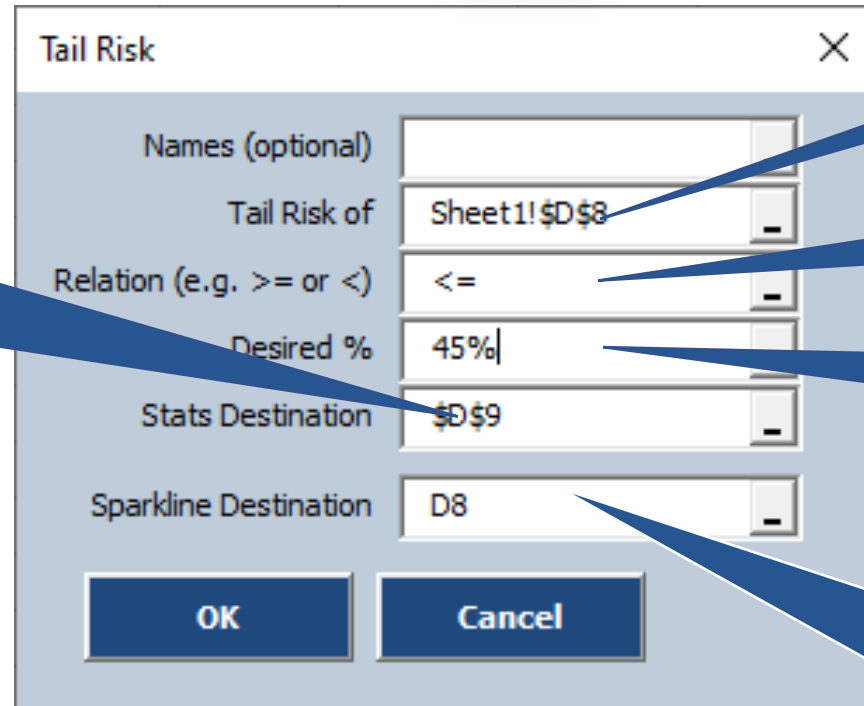
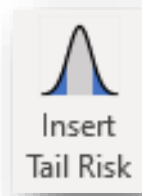
3. Select desired percent

2. Select Formula you want the Stats for

The image shows two overlapping dialog boxes from an Excel application. The left dialog is titled 'Average / Standard Deviation (same syntax)'. It has a title bar with a sigma symbol and the text 'Insert Std Dev'. It contains fields for 'Names (optional)', 'Average of' (with the value 'Sheet1!\$D\$8'), 'Stats Destination' (with the value '\$D\$9'), and 'Sparkline Destination' (with the value 'D8'). There are 'OK' and 'Cancel' buttons at the bottom. The right dialog is titled 'Percentile'. It has a title bar with a percent sign and the text 'Insert Percentile'. It contains fields for 'Names (optional)', 'Output' (with the value 'Sheet1!\$D\$8'), 'Desired %', 'Stats Destination' (with the value '\$D\$9'), and 'Sparkline Destination' (with the value 'D8'). There are 'OK' and 'Cancel' buttons at the bottom. Blue callout boxes with white text provide instructions and reminders, pointing to specific elements in the dialog boxes.

e. Insert Tail Risk

(The Average Above or Below a Specified Percentile)



1. Select location of Tail Risk result before clicking button

2. Select Formula you want the Tail Risk for

3. Relation may be typed directly or refer to a cell or range

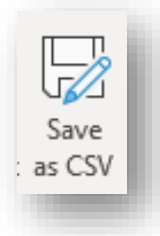
4. Desired percent may be typed directly or refer to a cell or range.

5. The optional Sparkline Destination will be auto-filled based on the Formula address and the Default Sparkline Position in the Settings Dialog. You may also manually adjust it.

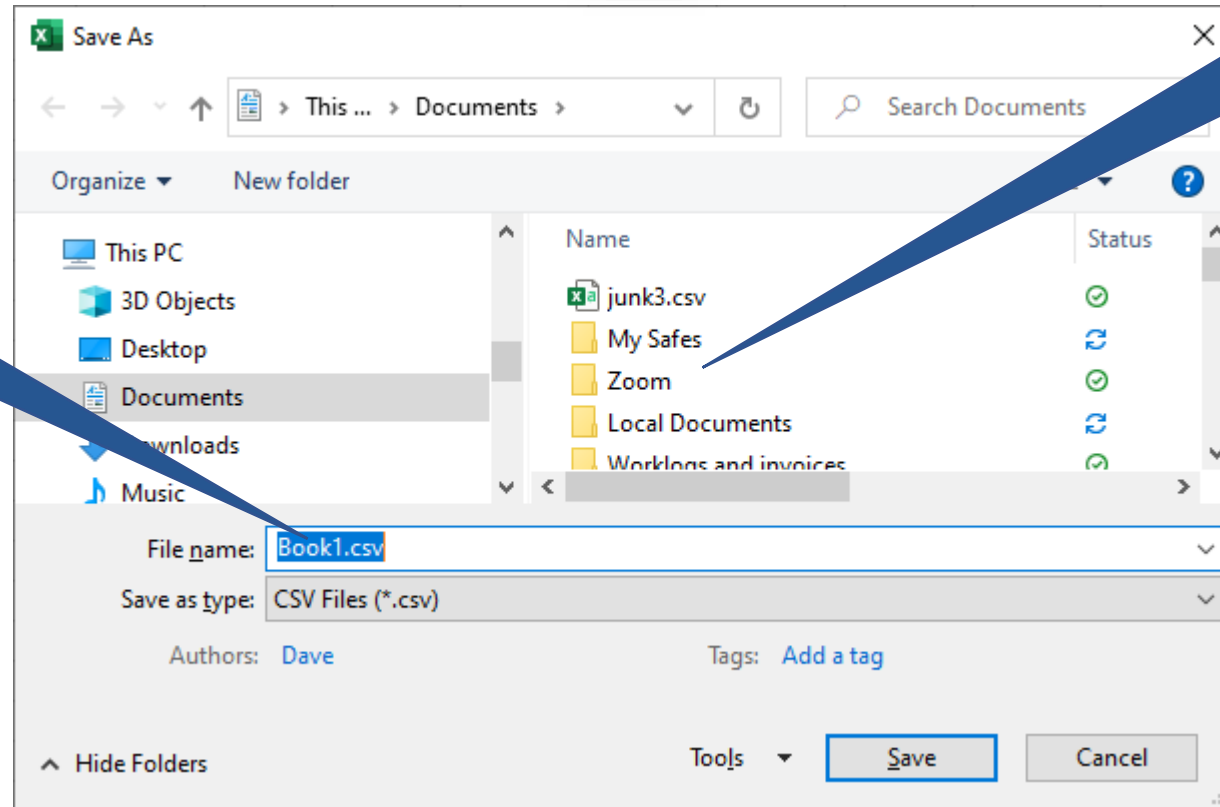
Reminder: You may optionally name formulas when you get statistics on them. This is useful if you plan to save your outputs.

Stats appears in blue to indicate a statistic calculated over all trials.

f. Save as CSV



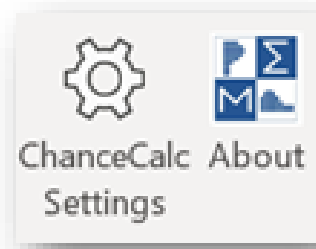
1. Enter file name under which to save data



2. Select folder to save data

Simulated Data from the PMTable Tab will be saved with the name you specify

g. Settings and About



Version Number

ChanceCalc Settings

Warn before over-writing data

Number of Trials

Round Chance of Whatever to...

percent

Default Sparkline Location

Above

Left Formula Cell Right

Below

No sparkline

Choose number of trials (3.0 Libraries only). 2.0 Libraries are pre-specified.

Limit precision on Chance of Whatever to avoid over specificity.

Set default position of sparklines as relative to formula cells used in SIP Input, Chance of Whatever, Avg, Percentile, and Tail Risk.

About ChanceCalc

ChanceCalc Calculator Release v Beta 1.5.25 full
Designed by Sam Savage
Programmed by David Empey
Based on the SIPmath Network Technology Stack
For help or questions email us at info@probabilitymanagement.org

SIPMath™ 3.0 Standard
Powering The Arithmetic of Uncertainty

Metalog™ System
Quantifying Uncertainty

HDR™ Generator
Ensuring Coherence

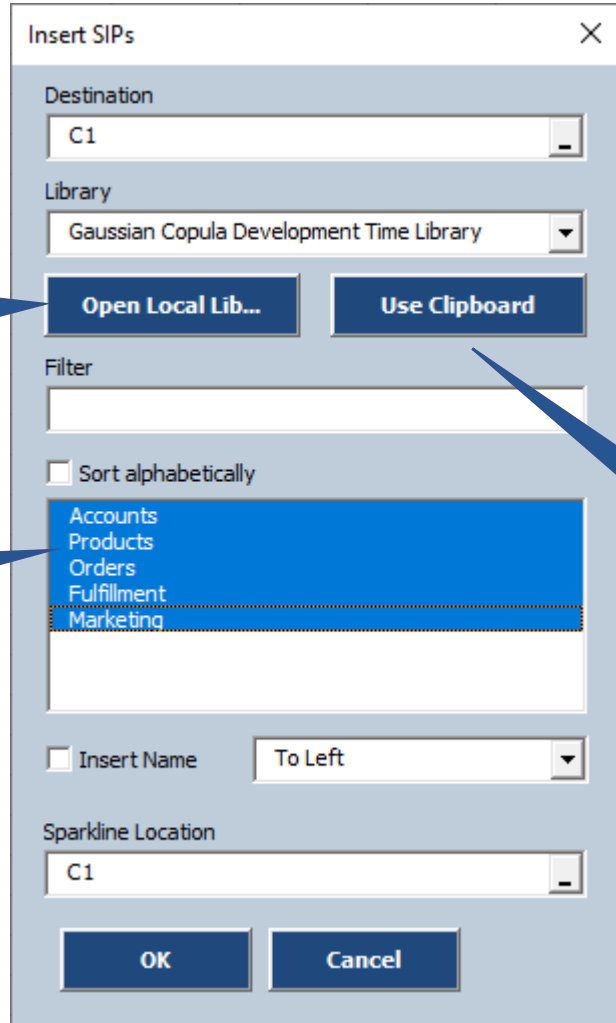
© Copyright 2021, ProbabilityManagement.org

www.probabilitymanagement.org

2. Reading Libraries

Libraries types supported are CSV, SIPmath™ 2.0 and 3.0 Standard and may be accessed from the web or your computer

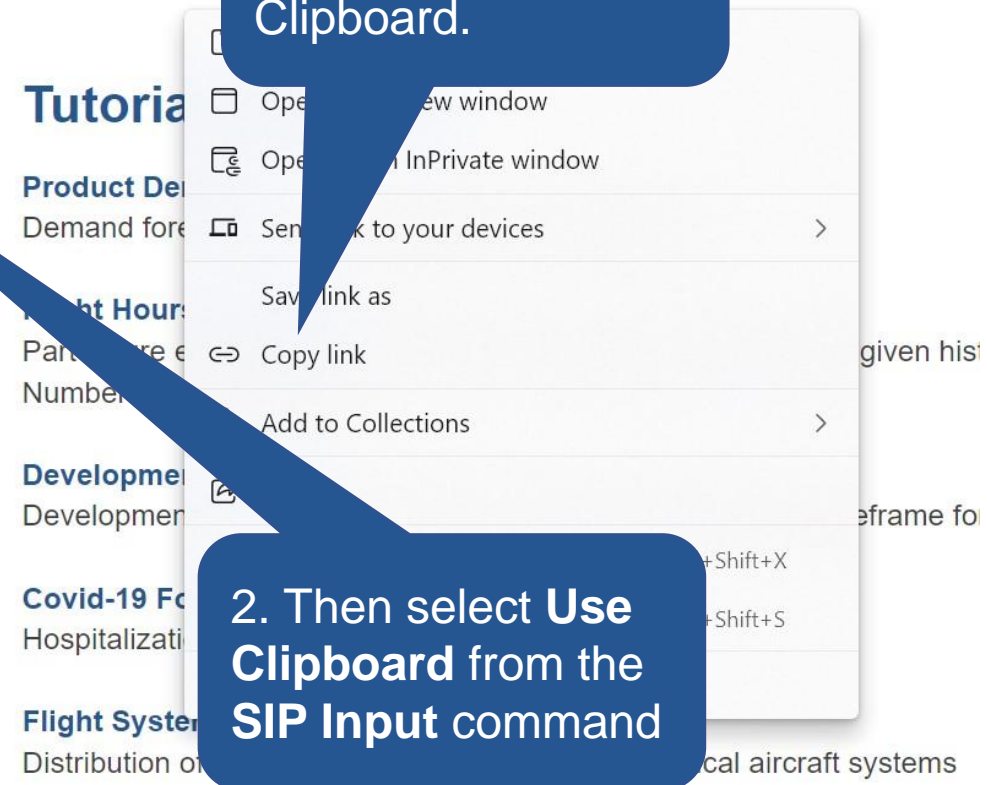
From Your Computer



Click Open Local Lib...
Then browse to the desired file.

DON'T FORGET to select desired variables.

From the Web



1. Right Click web link and Copy to the Clipboard.

2. Then select Use Clipboard from the SIP Input command